



# General Information

It is impossible to predict every preparation contingency in a disaster, but it is important to consider what each member of your family should do. Remember, it is likely family members may not be together when a disaster strikes, so it is important they are all familiar with the following:

### ***In case of an emergency, REMEMBER:***

- Roads might be impassable and parking could be a problem. Prepare to walk to shelters and evacuation sites.
- Lock and secure your home when you evacuate.
- Call a family contact to report your situation, and then avoid using phones to keep them open for emergency purposes.
- Follow the directions of the EMA, police, fire, and emergency shelter officials.
- Emergency kit and your own bedding/clothes.
- If shelters are opened, understand that space is limited; if you are planning to evacuate, do so early.
- Residents of any community may evacuate to any shelter opened by the Hawaii EMA or American Red Cross. Emergency Broadcast System announcements will provide information regarding the location of the nearest shelters.

### ***Shelter:***

- Only certified service animals are allowed inside the shelter. Other animals and pets will be directed to the nearest pet shelter.
- Expect the shelter to be crowded. Be tolerant and patient with the situation.
- Bring a book or other items to help pass the time in the shelter. Personal audio devices are okay, but speakers are not.
- Matches, lighters, or open flames are not allowed in the shelter.
- The possession or use of alcohol, illegal drugs, and weapons in emergency shelters is strictly prohibited.
- Floor space is limited in shelters. Your emergency kit should include a sleeping bag or something you can use as both a mattress and cover.



# Emergency Kit

It is important to prepare in advance enough of the basic items below for each of your family members. This kit should be as portable as possible. Place items in backpacks, duffel bags, or other containers that family members can realistically carry.



### ***Your kit should contain:***

- Water: 1 gallon per person, per day
- Food: 2,000 calories per person, per day; non-perishable
- First Aid Kit
- Medications
- NOAA alert radio
- Extra batteries
- Flashlight
- Can opener
- Small tools/multi-tool
- Warm clothes
- Sturdy shoes
- Personal hygiene items (toothbrush, toothpaste, deodorant, etc.)
- Toilet paper
- Pet supplies
- Glasses/eye care
- Cash
- Identification and important documents
- Comfort/entertainment items
- Face masks and hand sanitizer

### **Other Sources of Emergency Planning Information:**

- **Provident Living**  
[providentliving.churchofjesuschrist.org](http://providentliving.churchofjesuschrist.org)
- **State of Hawaii Emergency Management Agency**  
[dod.hawaii.gov/hiema](http://dod.hawaii.gov/hiema)
- **State of Hawaii Emergency Information**  
[portal.ehawaii.gov/residents/emergency-information](http://portal.ehawaii.gov/residents/emergency-information)



# Laie Emergency Planning

Most of Laie and the surrounding communities are in a **low-lying, coastal plain subject to damage from hurricanes, tsunamis, and flooding**. All of these have impacted the area in the past and could strike again, as could other disasters.

**It is important for everyone to be prepared before another disaster strikes.**

This brochure contains valuable information on what you need to do before a disaster occurs and when you receive a warning to evacuate.

***We cannot understate the importance of advance preparation for disasters:***

They can happen at any time and without warning. Sudden rock-slides, collapsing utility poles, or serious traffic accidents can block Kamehameha Highway for hours or even days. Please be aware of the following emergency planning practices:

- Follow EMA instructions
- Establish and practice family evacuation plans
- Wear sturdy shoes and clothing during evacuations
- Stay away from downed power lines

### ***If you have time:***

- Bring your emergency kit with you
- Make arrangements for your pets
- Check on neighbors with special needs
- Safeguard your family documents in a waterproof container
- Make sure you have an adequate water supply in case water service is cut off

# Hurricane

Though relatively rare, hurricanes can strike Hawaii. Hurricane season lasts from June through November each year. The National Weather Service ([www.weather.gov](http://www.weather.gov)) tracks developing storms, and will issue advisories as needed:

**Hurricane Watch:**

Hurricane conditions possible within 48 hours

**Hurricane Warning:**

Hurricane conditions expected within 36 hours

**If a watch/warning is issued, prepare yourself!**

- Evacuate to the nearest open shelter as directed by the Hawaii Emergency Management Agency or other emergency officials. See reverse side for more shelter information.
- Take your emergency kit. See reverse side for kit instructions.
- If you have time, board up or tape glass windows.
- (Only if instructed or if you suspect lines will be damaged) Shut off your residence's water at the main valve and electricity at the main breaker.

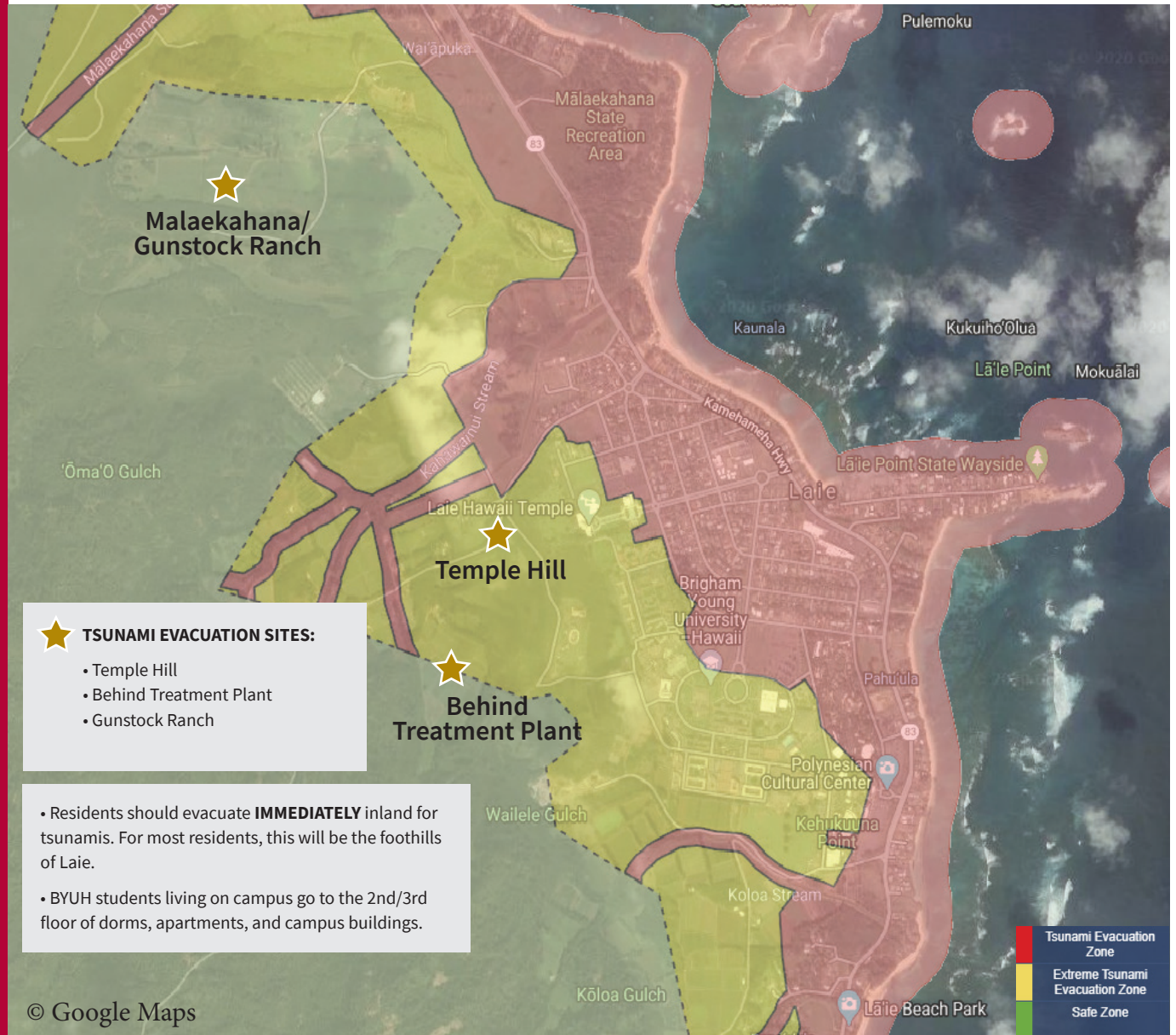
# Tsunami

The U.S. government and the state of Hawaii monitor potential tsunamis across the Pacific, but an undersea earthquake near Oahu could generate a destructive wave that could strike. That's why it is important to be ready to:

- Immediately go mauka (inland) or to higher ground if you feel the ground move.
- Evacuate low-lying coastal areas if you hear the Civil Defense warning sirens (other than the normal monthly test).
- Evacuation sites include Temple Hill and areas behind BYUH campus—parking lots and grass areas (not on the road) and walk inland.
- Never go to the beach to watch for tsunami waves.
- Refer to the disaster evacuation map on this brochure or at: [dod.hawaii.gov/hiema/public-resources/tsunami-evacuation-zone](http://dod.hawaii.gov/hiema/public-resources/tsunami-evacuation-zone).

# EVACUATION MAP

Effective Feb. 2021



- ★ TSUNAMI EVACUATION SITES:**
- Temple Hill
  - Behind Treatment Plant
  - Gunstock Ranch

- Residents should evacuate **IMMEDIATELY** inland for tsunamis. For most residents, this will be the foothills of Laie.
- BYUH students living on campus go to the 2nd/3rd floor of dorms, apartments, and campus buildings.

© Google Maps

**📞 IMPORTANT EMERGENCY TELEPHONE NUMBERS**

Emergency Police, Fire, Ambulance .....	911
Telephone Repair .....	611
Hawaiian Electric .....	1-855-304-1212
(To report power outages, downed lines, trees on lines, etc.)	
Hawaiian Electric .....	(808) 543-7511
(For questions about food safety during a power outage)	

City and County Department of Emergency Management .....	(808) 723-8960
Hawaii Emergency Management Agency .....	(808) 733-4300
American Red Cross .....	(808) 734-2101
The Gas Company .....	(808) 535-0066
Hawaii Reserves, Inc. ....	(808) 293-9201
BYU-Hawaii Security .....	(808) 675-3911
Polynesian Cultural Center Security .....	(808) 293-3111
BYU-Hawaii Safety .....	(808) 675-3411